



GRILL OUT® HANDLE LIGHT

ES LÁMPARA DE ASA
GRILL-OUT® WEBER

FR LAMPE POUR POIGNÉE
DE BARBECUE À GAZ

DE WEBER GRILL-OUT®-
GRIFFLICHT

FI WEBER GRILL-OUT®
-KAHVAVALO

NO WEBER GRILL-OUT®
HÅNDTAKSLYS

DK WEBER GRILL-OUT®-
HÅNDTAGSLYS

SE WEBER GRILL-OUT®-
LAMPHANDTAG

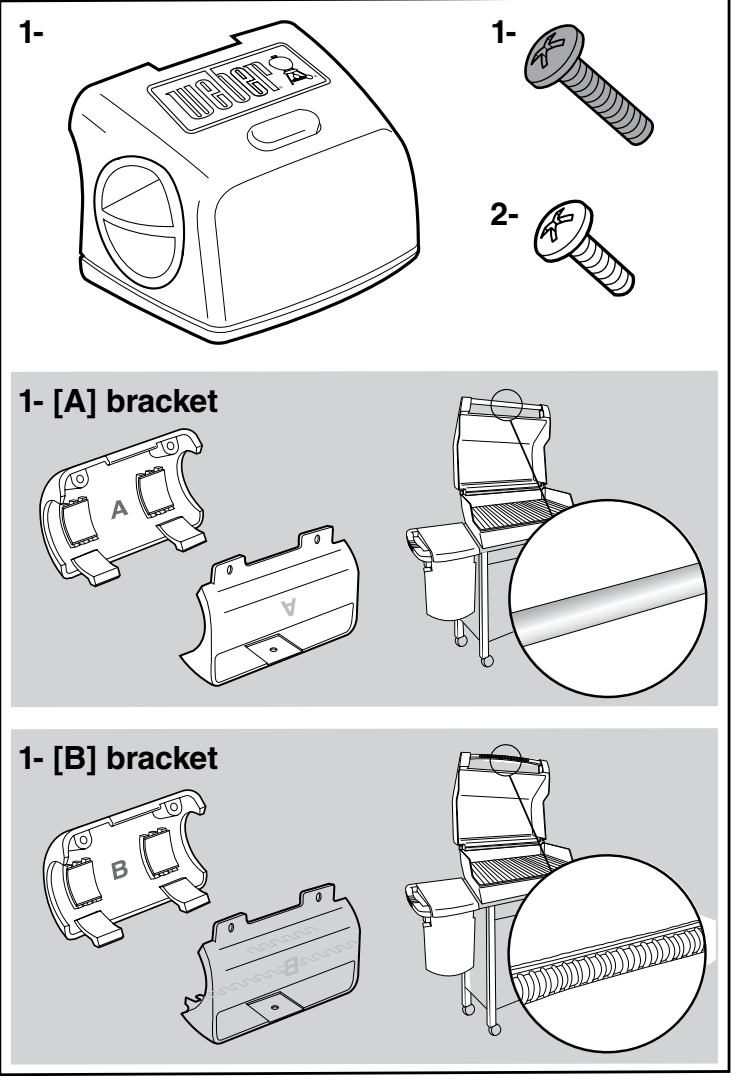
NL WEBER GRILL-OUT®
HANDGRIEPVERLICHTING

IT LAMPADA PER MANIGLIA
WEBER GRILL-OUT®

PT LUZ DA PEGA DO
GRELHADOR DE
EXTERIOR WEBER

PL OŚWIETLENIA
GRILL-OUT® DO
GRILLÓW WEBER

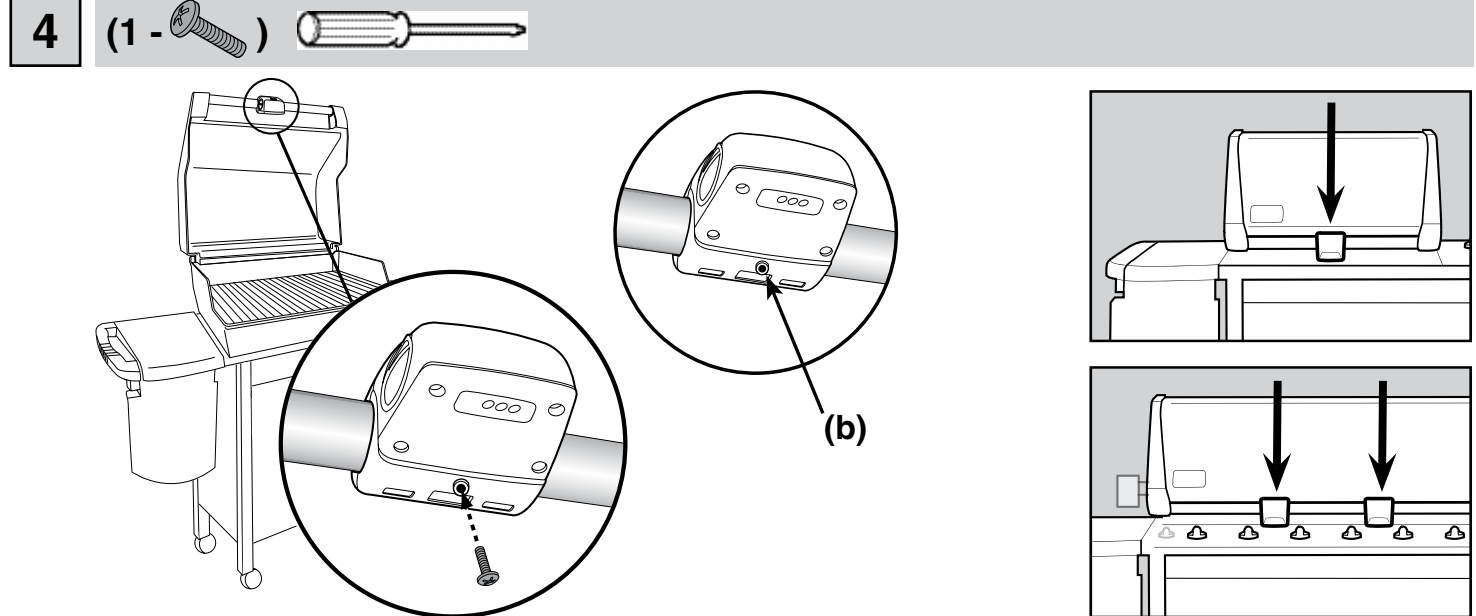
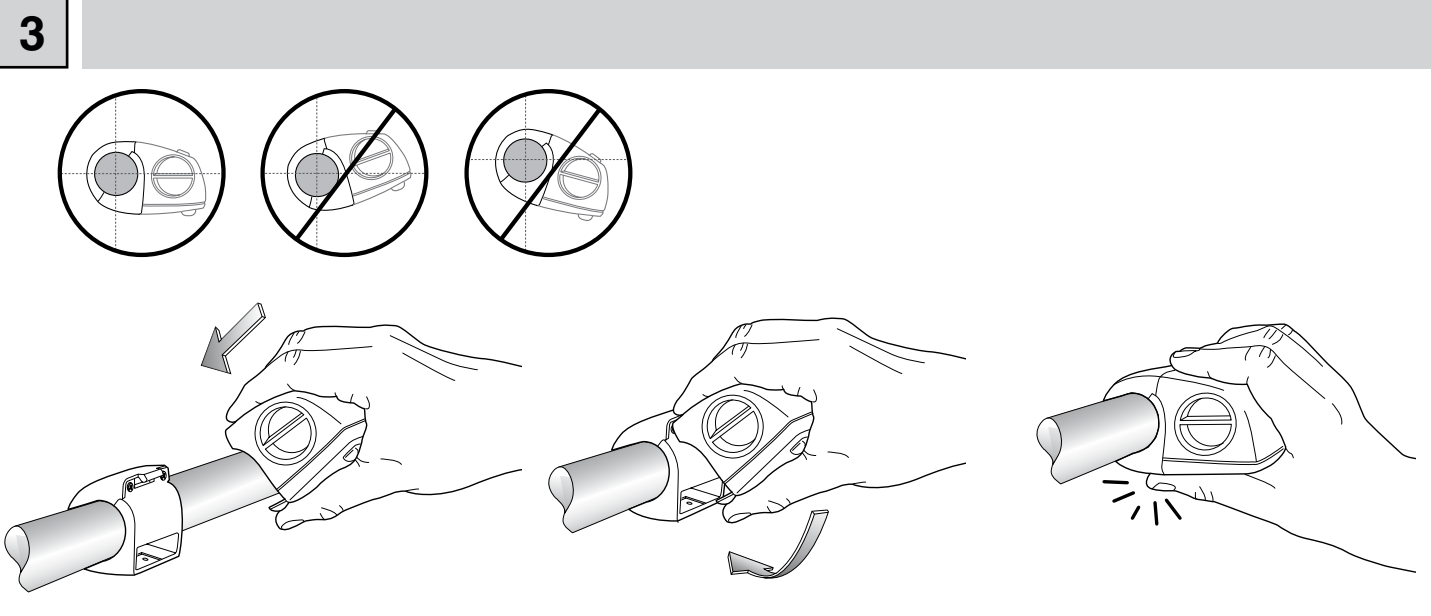
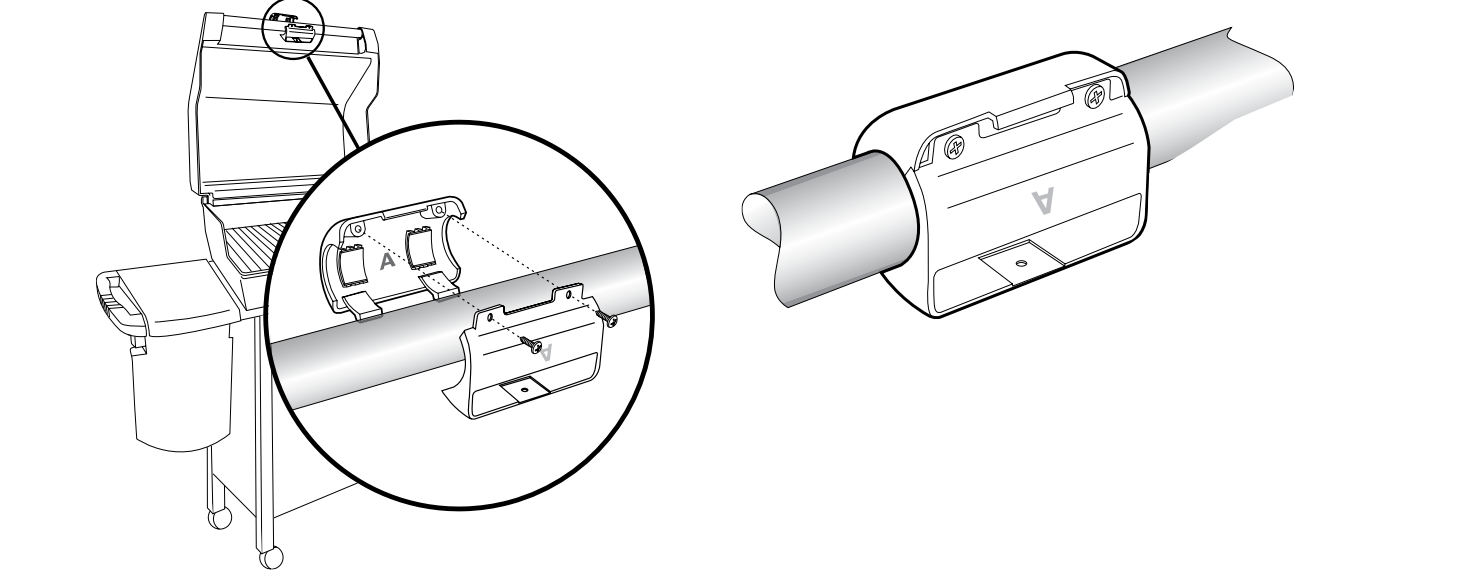
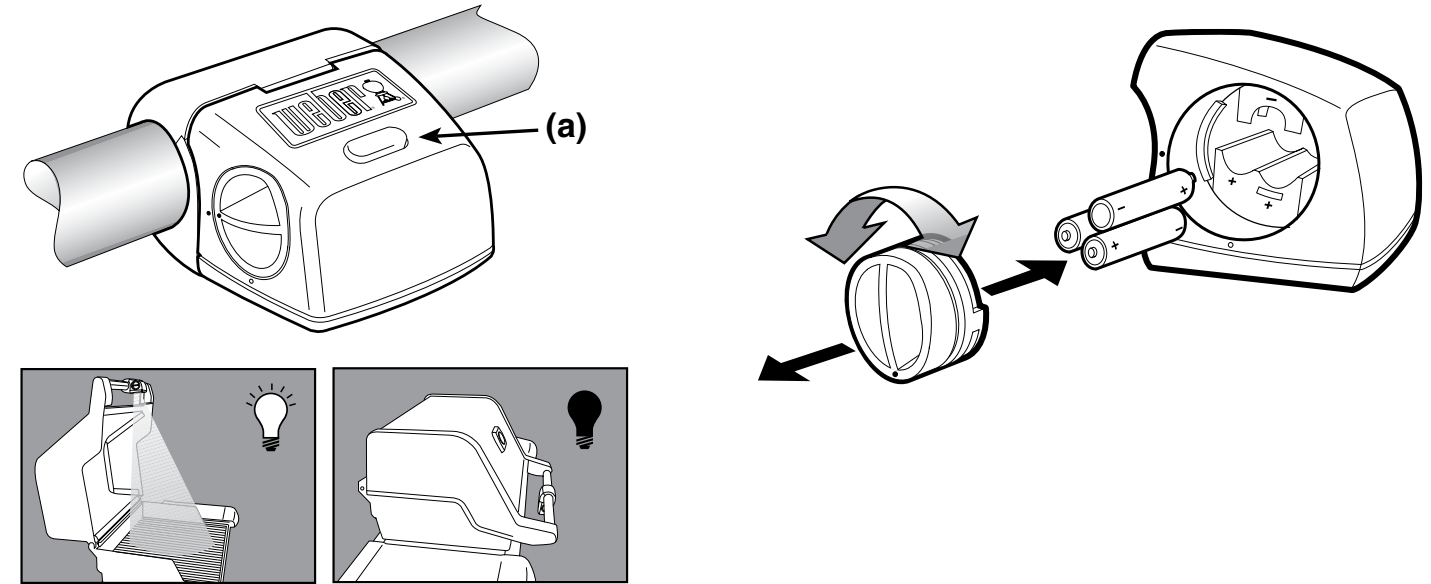
RU ОСВЕЩЕНИЕ ДЛЯ ГРИЛЯ
WEBER GRILL-OUT®



[A] Bracket

1 (3 - AAA)

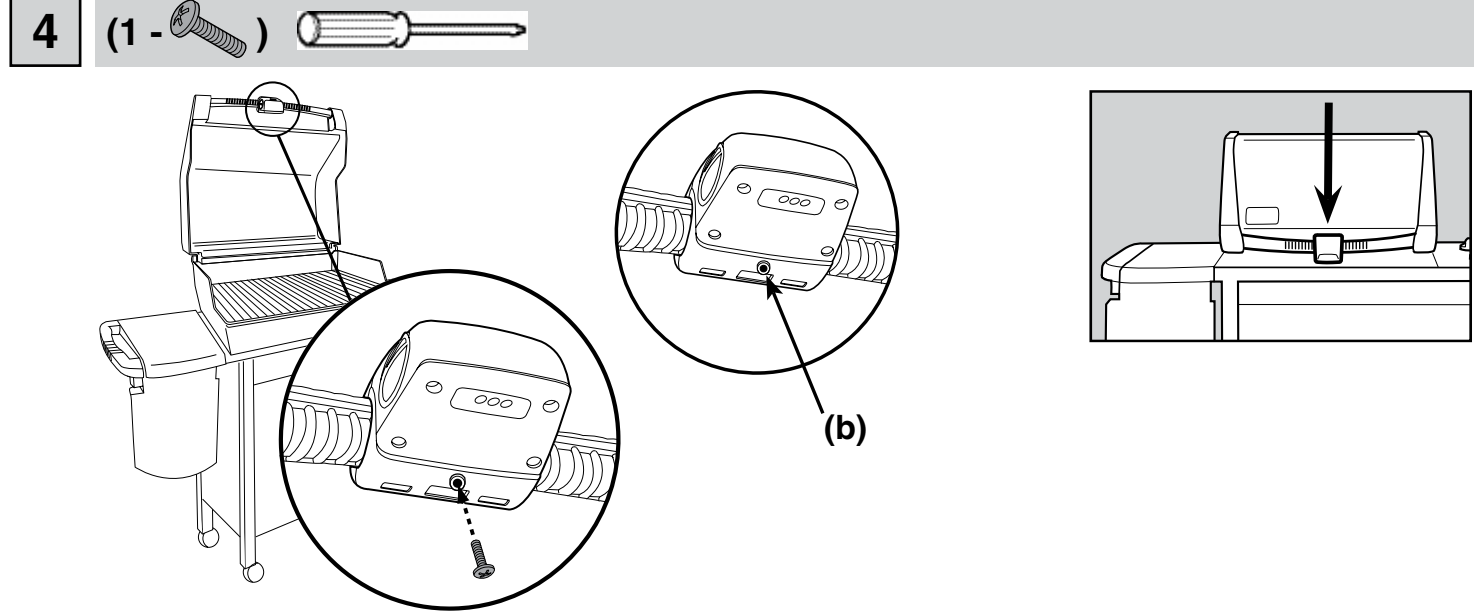
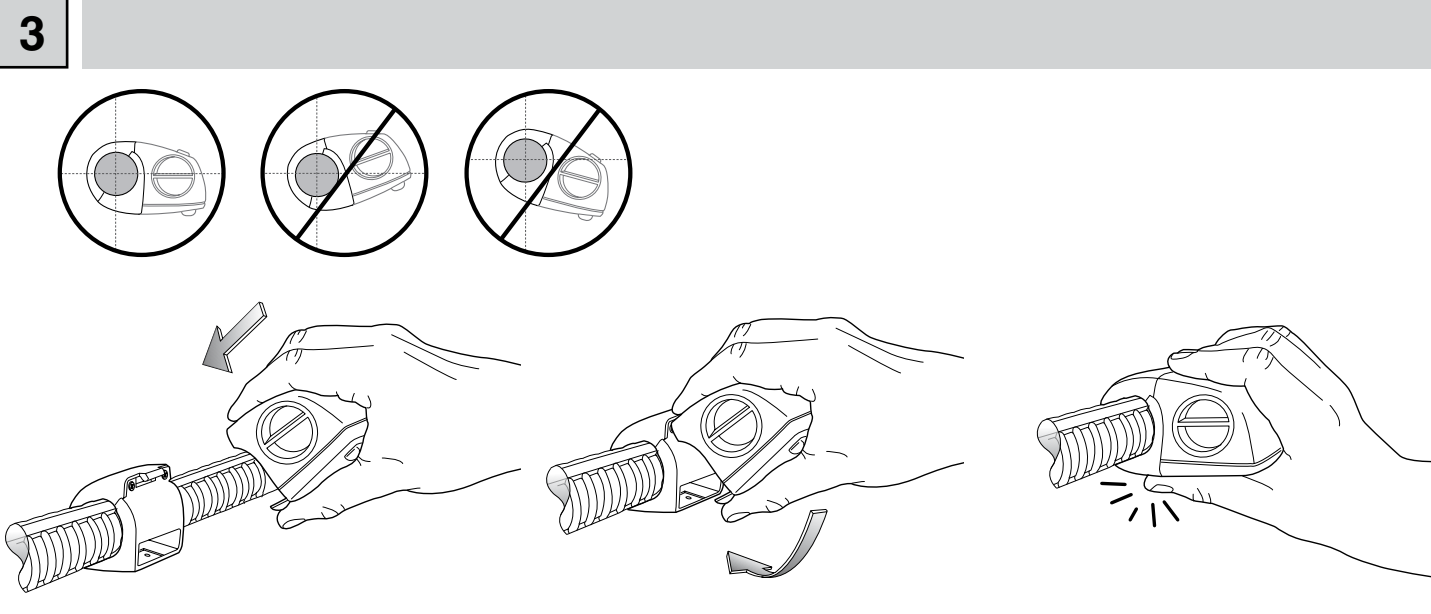
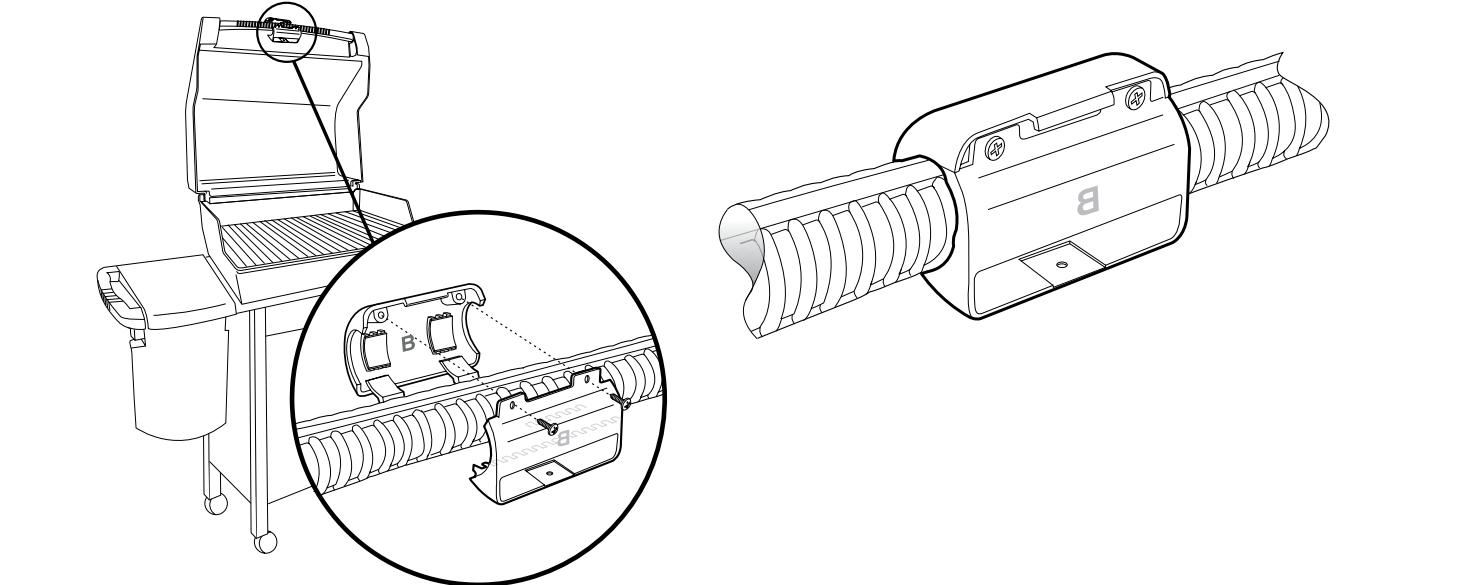
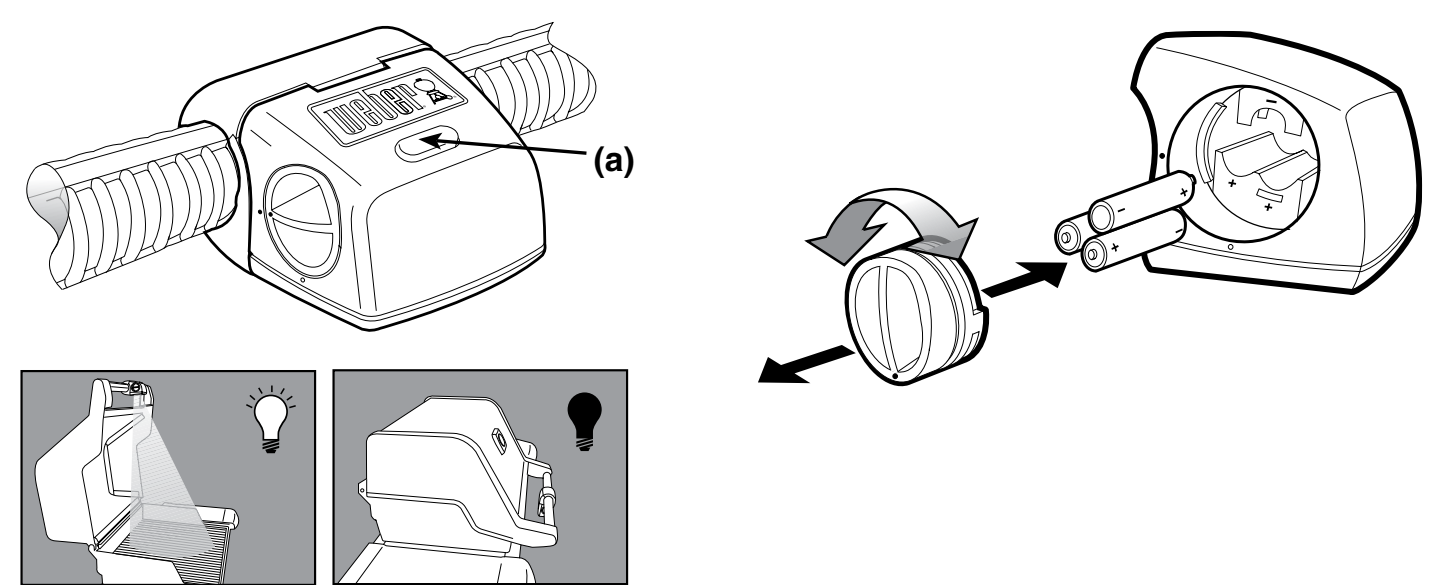
2 (2 -)



[B] Bracket

1 (3 - AAA)

2 (2 -)



- The Weber Grill Out™ Handle Light has a "Tilt Sensor": Lid up - ON / Lid Closed - OFF
- The power button (a) activates or deactivates the "Tilt Sensor." For daytime use, deactivate the sensor by pressing power button (a).
- Requires 3 "AAA" alkaline batteries (not included) Use alkaline batteries only. Do not mix old and new batteries or different types of batteries (standard, alkaline or rechargeable). If you do not plan to use the Weber Grill Out™ Handle Light for a month or more, remove the batteries.
- CAUTION:** Make sure grill is turned off and cool before installing the Weber Grill Out™ Handle Light. Open lid before installing BRACKET A / B. Make sure Weber Grill Out™ Handle Light BRACKET A / B is positioned parallel to cooking grates. Do not over-tighten screws.
- You may hear a rattle in the lightpod. This is normal.
- To replace batteries, remove lightpod by removing screw. Push tab (b) and pull apart.

IF LIGHT DOES NOT TURN ON...	
CHECK	CURE
Are the batteries old?	Replace batteries.
Are the batteries installed correctly?	See illustration in step 1.
Is the lid in the up position with the power button ON?	Light will activate when lid is open.
Is the light activated?	Press the power button.
Is the light positioned correctly on the handle?	Adjust position (See illustration in step 2).

If problems cannot be corrected by using these methods, please contact the Customer Service Representative in your area or log onto www.weber.com.

WARRANTY
Weber-Stephen Products Co., (Weber®) hereby warrants to the ORIGINAL PURCHASER, that it will be free from defects in material and workmanship from the date of purchase as follows: 2 year(s) when assembled, and operated in accordance with the printed instructions accompanying it. Weber may require reasonable proof of your date of purchase. THEREFORE, YOU SHOULD RETAIN YOUR SALES RECEIPT OR INVOICE AND RETURN THE WEBER LIMITED WARRANTY REGISTRATION CARD IMMEDIATELY. This Limited Warranty shall be limited to the repair or replacement of parts that prove defective under normal use and service and which on examination shall indicate, to Weber's satisfaction, that they are defective. If Weber confirms the defect and approves the claim, Weber will elect to repair or replace such parts without charge. If you are required to return defective parts, transportation charges must be prepaid. Weber will return parts to the purchaser, freight or postage prepaid. This Limited Warranty does not cover any failures or operating difficulties due to accident, abuse, misuse, alteration, misapplication, vandalism, improper installation or improper maintenance or service, or failure to perform normal and routine maintenance. Deterioration or damage due to severe weather conditions such as hail, hurricanes, earthquakes or tornadoes, discoloration due to exposure to chemicals either directly or in the atmosphere, is not covered by this Limited Warranty. Weber shall not be liable under this or any implied warranty for incidental or consequential damages. This warranty gives you specific legal rights, and you may also have other rights, which vary from state to state.

This symbol indicates that the product cannot be disposed of in the trash. For instructions regarding proper disposal of this product in Europe, please visit www.weber.com, and contact the importer listed for your country. If you do not have internet access, contact your dealer for the importer's name, address and telephone number.



